



azure™

Multi-Platform Prosthetic Solutions

Your Connection for Every Connection



Introducing Azure

Multi-Platform Prosthetic Solutions

Azure multi-platform system prosthetics, ZimVie's newest brand and product offering, features a comprehensive selection of restorative products designed to work with over 30 of the world's leading implant systems.

With one of the most wide-ranging and innovative series of implant compatible prosthetics in the market, Azure allows you the flexibility to choose the ideal solution for every case from one source.

**The quality your customers expect.
The affordability your business seeks.
The first-class customer support
you deserve.**



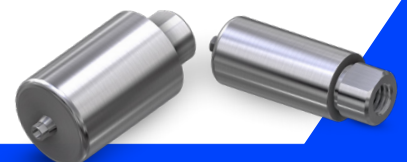
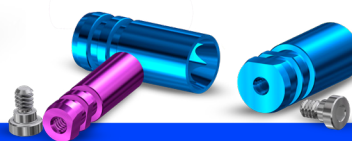
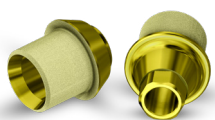
Precise connection engineering and innovative prosthetic design come together.

- **Precise Connection Fit** – Interfaces designed and milled with the highest engineering and manufacturing standards.
- **Innovative and Harmonized Prosthetic Design** – Identical prosthetic interfaces integrate across implant systems with features that address major challenges in restorative dentistry.
- **Comprehensive Prosthetic Range** – Restorative components suitable for a wide variety of restorative techniques.
- **Cost Effective Prices** – Price points that help make implant dentistry a more attainable treatment option for patients across the economic spectrum.
- **Reliable Support Team** – Our experienced team members are here to support you and your growing business through Azure.



Prosthetic Options

- Ti-Base T (Titanium Ti-Bases)
- Ti-Base A (Angled Screw Channel Ti-Bases)
- Ti-Base C (CEREC® Compatible Ti-Bases)
- Pre-Milled Blanks
- Blank Holders
- Digital Scan Bodies
- Digital and Stone Analogs
- Temporary Cylinders
- Castable Cylinders
- Cobalt Chrome Castable Cylinders
- Straight and Angled Cement Retained Abutments
- OverdenSURE® Abutments
- System-compatible screws
- Driver tips, adapters, and tooling



Multi-Platform System Compatibilities

Anthogyr Axiom®
AA-Conical

Astra Tech EV
DAEV-Conical

Astra Tech Osseospeed™ TX
DATX-Internal

Bego Semados®
BS-Internal

BioHorizons® External
BHEX-External

BioHorizons® Internal
BHI-Internal

Biotech Kontakt®
BK-Conical

BTI®
BI-Internal

Camlog®
CCA-Internal

Conelog®
CCO-Conical

Dentium Superline™ and Implantlum®
DT-Conical

Dentsply Ankylos® C/X
DA-Internal

Globald In-Kone®
GD-Conical

Medentis ICX®
MI-Conical

Megagen Anyridge®
MA-Conical

MIS® C1
MSC-Conical

MIS® Seven
MSH-Internal

MIS® V3
MSV-Conical

Neodent® Grand Morse
NG-Conical

NobelActive® and NobelReplace®
NAC-Conical

Nobel Brånemark®
NB-External

NobelReplace Select™
NRT-Trilobe

Osstem® TS / Hiossen® ET
OH-Conical

Phibo® TSH®
PB-External

Straumann® BLX
SBLX-Conical

**Straumann® Bone Level
and Azure Tapered Bone Level**
SBL-Conical

Straumann® Soft Tissue Level
STL-TIssue

ZimVie Certain®
ZC-Certain®

ZimVie External Hex
ZEX-External

ZimVie TSV®
ZTSV-Internal

azure™ | A ZimVie Brand

For more information, visit azuredental.com

All Azure products are manufactured according to ISO 9001 and ISO 13485 with CE marking for all products Class IIb. All Azure Angled Screw Channel Ti-Bases (Ti Base-A) Screws and Screwdrivers are based on the standard ISO 10664. ASTRA TECH™, OsseoSpeed™, ANKYLOS® C/X, XIVE®, FRIADENT®, ASTRATECH implant system™ EV and UniAbutment® and CEREC® are trademarks and/or registered trademarks of DENTSPLY SIRONA Implants. BioHorizons® is a registered trademark of BioHorizons, Inc Brånemark System®, NobelReplace® and Replace Select™, NobelActive™, NobelReplace®, NobelSpeedy™ and Multi-Unit® are trademarks and/or registered trademarks of Nobel Biocare AB. Neodent®, Grand Morse®, Straumann® and synOcta® are registered trademarks of Straumann Holding AG, Switzerland. MIS® is a registered trademark of MIS Implant Technologies, Ltd. Tapered Screw-Vent® and SwissPlus® are registered trademarks of Zimmer Dental, Inc. USA. Certain® is a registered trademark of Biomet 3i. Dyna® is a registered trademark of Dyna Dental Engineering BV. Camlog® and Conelog® are registered trademarks of CAMLOG Biotechnologies AG. Megagen® is a registered trademark of MEGAGEN IMPLANT CO. LTD. Torx® is a registered trademark of ACUMENT INTELLECTUAL PROPERTIES, LLC. Bego Semados® is a registered trademark of BEGO GmbH & Co. KG. Anthogyr® is a registered trademark of Anthogyr SAS. Medentis ICX® is a registered trademark of Medentis Medical GmbH. Osstem® and Hiossen® are registered trademarks of OSSTEM IMPLANT CO. LTD. Dentium® is a registered trademark of Dentium Co., Ltd. GOBALD® is a registered trademark of Global D SASU. Biotech Kontakt® is a registered trademark Biotech Dental SAS. BTI® is a registered trademark BTI Biotechnology Institute. PHIBO® is a registered trademark PHIBO Dental Solutions S.L. Azure products can be used only by licensed dentists, physicians, and labs. Please refer to the Instructions for Use, available on the website azuredental.com or supplied with the product. Product clearance is limited to certain countries and/or regions. Please contact your local distributor for more details.

Unless otherwise indicated, as referenced herein, all trademarks and intellectual property rights are the property of ZimVie Inc. or an affiliate; and all products are manufactured by one or more of the dental subsidiaries of ZimVie Inc. (Biomet 3i, LLC, Zimmer Dental, Inc., etc.) and marketed and distributed by ZimVie Dental and its authorized marketing partners. Azure MPS abutments, components, and tools are manufactured by Terrats Medical S.L. For additional product information, please refer to the individual product labeling or instructions for use. Product clearance and availability may be limited to certain countries/regions. This material is intended for clinicians only and does not comprise medical advice or recommendations. Distribution to any other recipient is prohibited. This material may not be copied or reprinted without the express written consent of ZimVie. ZV1605 REV B 01/25 ©2025 ZimVie Inc. All rights reserved.

